

Trombone 4



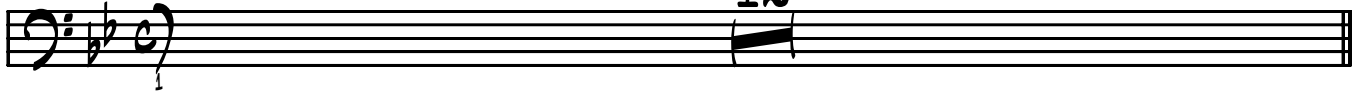
- Alberta -

the Alberta official song

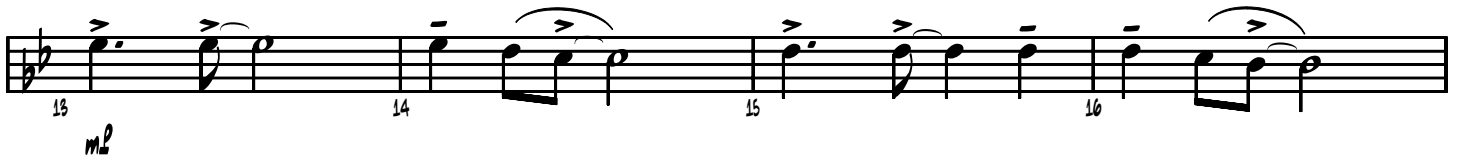
W/M by Mary Kieftenbeld
arr. by Allan Gilliland

(UP TEMPO SWING $\text{♩} = 90$)

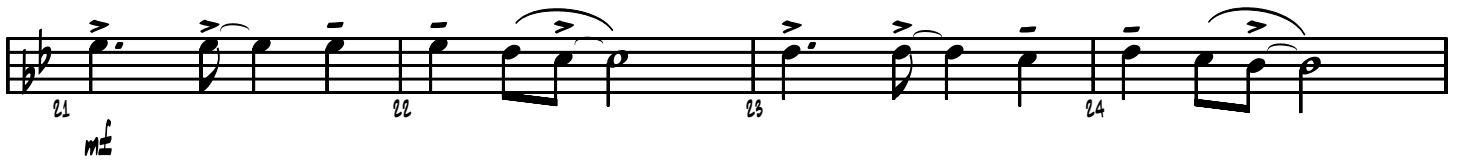
12



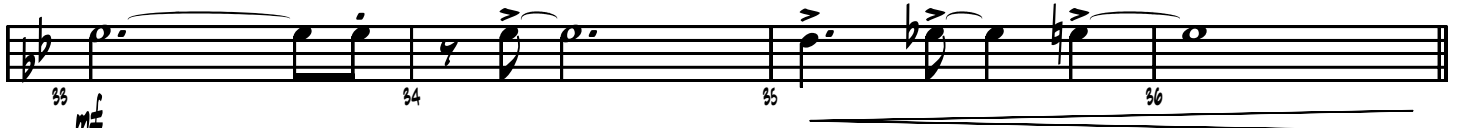
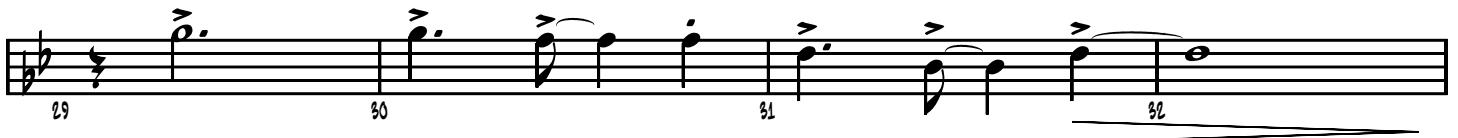
A **S**



B



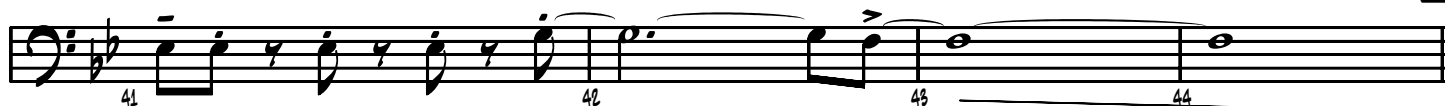
C



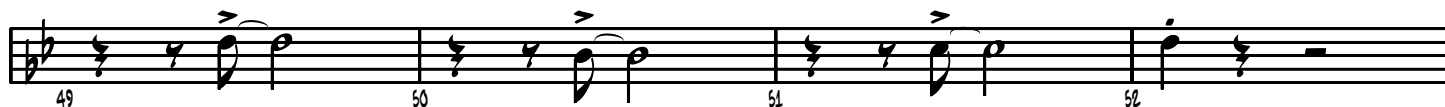
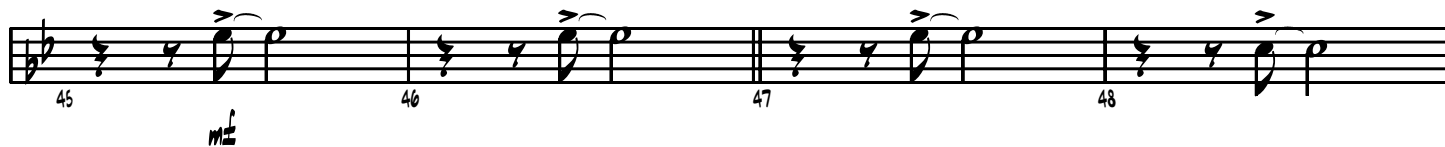
D



To CODA 



E

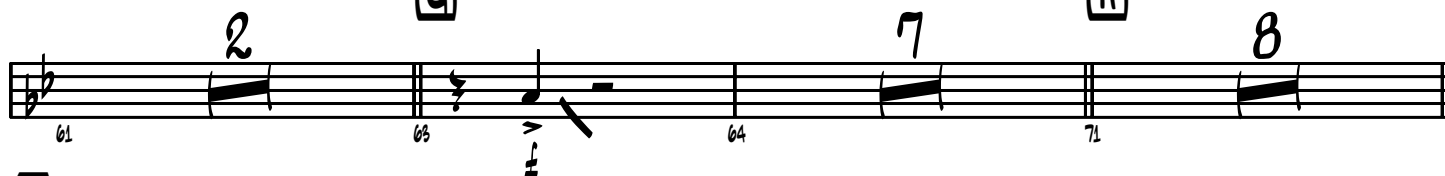


F

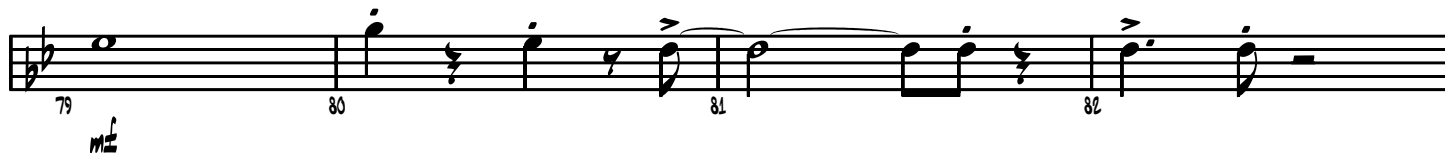


G

H



I



J



91 92 93 94

95 96 99 107 *mf*
(K) (OPEN FOR SOLOS) (L)

108 109 110 111

112 113 114 115 (M) 8

123 124 125 126 (N)

127 128 129 130 (D.S. AL CODA AFTER LAST SOLO)

(⊕) CODA

131 132 133 134 *mf*

135 136 137 138 *f* *ff* *p*

BACK TO (K) FOR MORE SOLOS